
Rangers Lodge Wildlife Hospital: Overview and Fundraising Support

*Supporting wildlife rehabilitation
and care initiatives*



Agenda for Today

Introduction to Rangers Lodge Wildlife Hospital

Wildlife Rehabilitation and Care

Continuous Improvement of our Facilities

Ways to Support and Fundraise

Rangers Lodge
Wildlife Hospital CIO



**British Wildlife
Rehabilitation Council**

ASSOCIATE ORGANISATION

24-25

Introduction to Rangers Lodge Wildlife Hospital



History and Establishment



Founding of Rangers Lodge Wildlife Hospital CIO

Founded about 20 years ago in the kitchen of their home, Jane and Ross Burrows started to care for sick and injured wildlife. Rangers Lodge Wildlife Hospital aimed to provide care for injured wildlife, marking the beginning of a vital service for both the local community, the Horsham and Crawley district and even further afield. RLWH was formally established as a not for profit Charity in 2021.



Growth and Development

Over the years, the facility has expanded its capabilities with both an internal intensive care facility, and outdoor enclosures.

The hospital accepts new patients 365 days a year. We will care for all native British wildlife , with admissions often caused by injuries from conflict with people. This is our opportunity to redress the balance and give our British Wildlife a fighting chance for survival.



Passionate Founders, Trustees, and Volunteers

The success of the Rangers Lodge Wildlife Hospital is supported by the dedication of it's founders Jane and Ross Burrows and our volunteers who give up their time to help care for, feed and clean all enclosures. We are all committed to wildlife welfare.

Key Services and Facilities

Admissions

We provide prompt emergency care 24/7 for injured wildlife, always ensuring that all animals in our care are treated with compassion and given the best possible chance for survival. Whilst some animals cannot be saved, we will always ensure that they are given prompt treatment.

Treatment and Care

Comprehensive medical treatments are available for various health conditions, with Jane and her team working hard to ensure that the welfare needs of the animals are met. Our volunteers follow strict protocols for cleaning and feeding all animals to ensure their continued welfare and recovery.

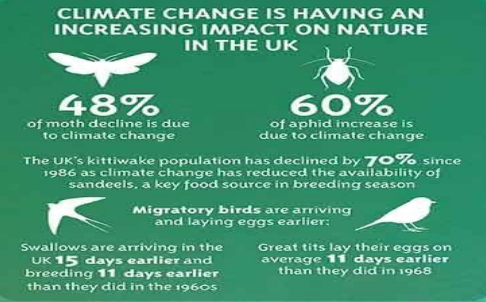
Rehabilitation Services

Our rehabilitation services support patients in their recovery journey, and where possible release each animal back into the wild or find them suitable and safe release sites.



Wildlife Rehabilitation and Care

THE UK'S BIODIVERSITY IS DECLINING



However, public sector expenditure on biodiversity in the UK, as a proportion of GDP, has **fallen by 42%** since a peak in 2008/9

Our Impact

At Rangers Lodge Wildlife Hospital, we try to redress the balance of humans vs nature.

- The UK's biodiversity is in decline with some shocking statistics
- Last year alone we accepted over 1000 animals into the hospital including Hedgehogs, Foxes, Corvids, Deer, Ducklings, and Owls
- Some of our most interesting patients this year have included the following:

Barn owl and tawny owl chicks

Fawns injured by dogs and cars

A tiny weasel who was found abandoned by a member of the public. Upon arrival the pup was dehydrated and very skinny, so with hourly feeds and round the clock care, she thrived and grew and was released into Warnham Nature Reserve.

Some of our success stories – “Bob”



A story we see all too often

In September 2022, Bob was admitted having been caught by a strimmer in someone's back garden. His initial admission photo is too graphic to share.

Our care plan

Bob was given pain relief straight away. Jane and her team cleaned and cared for the wounds, changing dressings and debriding. Bob's treatment took 2 months, with daily care.

Bob made a full recovery, wintered with us and was eventually released back to a safe location.

“Coco”

Thin and emaciated

In July 2024, Coco the Barn Owl arrived with us as an emaciated chick.

Our care plan

Coco went through a number of different rehabilitation stages with us, with our focus on helping him to develop and grow to be able to fend for himself when released.

Coco made a full recovery and has now been released



Coco
The Barn Owl
Soft release
18/9/24



Fox cubs

Fox cubs

In 2024 we had many fox cubs admitted to us at Rangers Lodge. Their journey began with us at the end of March / beginning of April. Due to many different circumstances, they were brought in to us as tiny cubs needing to be hand reared.

Our care plan

We are always careful to limit our interaction with any wildlife, so the cubs are transferred to our outdoor pens as soon as they are old enough to feed themselves.

Our foxes go through three stages of rehabilitation and, once mature enough to fend for themselves, are released to find their own territories.



Hedgehog Release Programme

As well as caring for adult hedgehogs, we frequently look after tiny hoglets which are too small to hibernate so they over-winter with us. In the Spring, we look for suitable release sites for these endangered animals.

Criteria for becoming a hedgehog carer:

- There must already be other hedgehogs visiting your area and if there aren't any there will be a good reason for this
- A well-built hedgehog house for each hedgehog
- The ability for the hedgehog to get out of your garden, to roam at will
- Suitable bushes and shrubs for cover
- Non-use of pesticides
- Any fish pond must have shallow, sloping sides, so the hedgehog can get out if it falls in
- No chain-link fences, as hedgehogs can get their head stuck
- Your willingness to provide cat food every evening
- Make a minimum donation of £20 per hedgehog

Please note : We release our hedgehogs during spring, summer and autumn. We won't release any hedgehogs whilst there is still frost on the ground.



Continuous improvement of our Facilities



Projects and plans

RLWH would eventually like to create a purpose-built animal hospital which would enable us to accept more patients each year.

Our immediate priority is to expand our current facilities to provide more rehabilitation enclosures for when the patients leave the ICU, whilst still being in the security of the hospital grounds.

We are totally reliant on donations from our supporters to make this happen.

Our immediate projects requiring funding include:

- Fox cub rearing pens
- Larger deer enclosures
- Two new flight cages (now complete)

The list is far longer however and every donation counts

Ways to Support and Fundraise





Volunteer with us

Importance of Volunteers

Volunteers are essential to our operations, we currently have approximately 70 volunteers who give up their time to rescue, care for the patients and clean the accommodation. We are always looking for more volunteers – our shifts are either day time or evening and we require support all through the year.

Hands-On Experience

Volunteering offers individuals hands-on experience in wildlife care, enhancing their skills and knowledge in animal welfare.

Our volunteers span a wide age range from 16 – 75 and we regularly work alongside local colleges to provide work experience.

Direct Donations and Sponsorships

Essential Funding

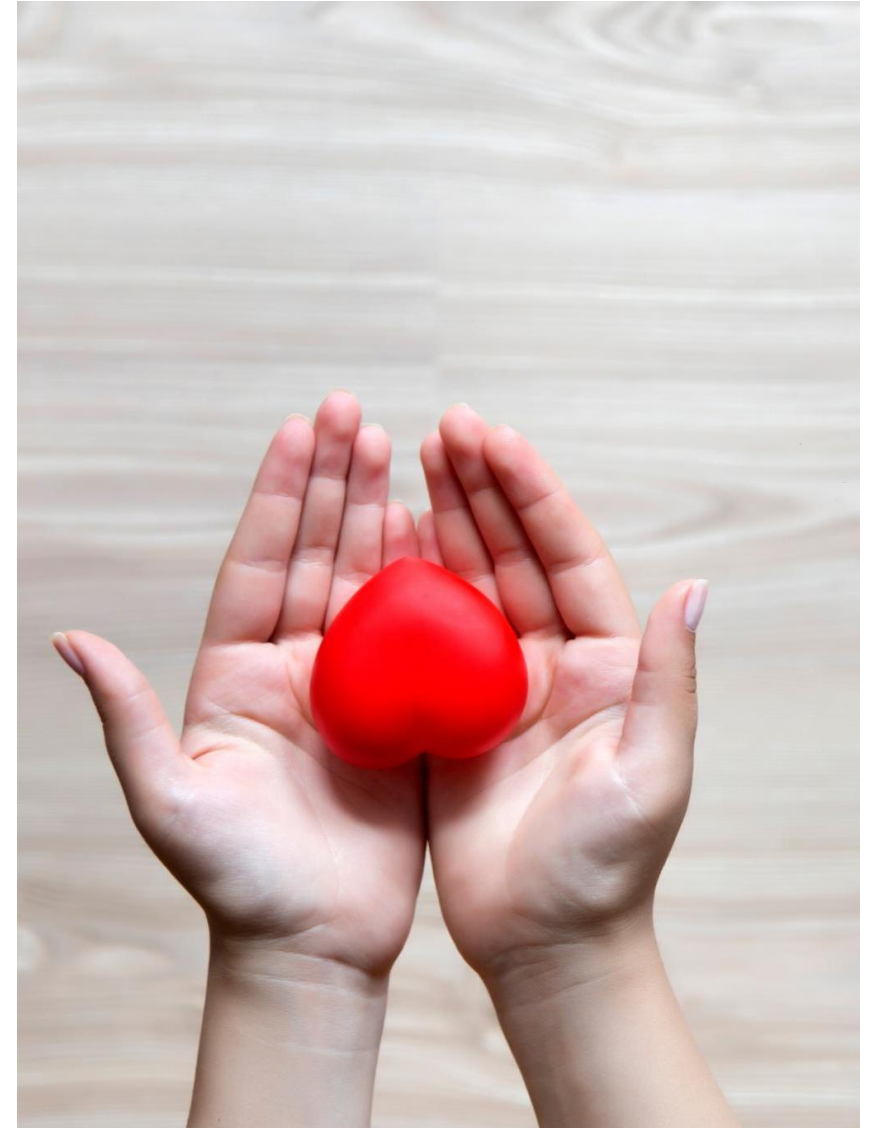
Direct donations and sponsorships are critical for maintaining our hospital's daily operations and ensuring quality services.

Impact of Contributions

Every contribution, no matter how small, plays a vital role in supporting our mission and improving patient care. We are always looking for donations of kitten, cat and dog food plus other items. We have an Amazon wish list which you can view on our Facebook page and website.

Projects

Donations help fund new projects which enable us to enhance our services meaning we can admit and treat more animals.



Fundraising Campaigns



Rangers Lodge Wildlife Hospital CIO

1.3K likes • 1.8K followers

[Donate](#) [Favorites](#) [Message](#)

 **easyfundraising**
feel good shopping

Raise **FREE** funds
for us every time you
shop online

[Find out more](#)

Currys PCWorld ebay Booking.com JOHN LEWIS JUST EAT
U switch sky M&S GROUPON ASOS

Amazon Wish List



Purchasing items from our Amazon Wish List is a meaningful and impactful way to make a positive difference to our hospital - we appreciate all donations, no matter how big or small!



Support local
good causes.

Win up to
£25,000

How Your Support Makes a Difference



Impact on Wildlife Care and Rehabilitation

Medical Care for Wildlife

Providing medical care is essential for the recovery of injured wildlife. Much of our funding goes towards medicines, equipment and veterinary bills.

Rehabilitation

Rehabilitation is crucial for the recovery process of injured animals. This helps them regain their strength and optimal health before returning to the wild.

Impact of Contributions

Every contribution directly affects the lives of the patients we treat, enabling us to provide necessary care and resources for their rehabilitation.





Enhancing Facilities and Resources

Impact of Donations

Donations play a crucial role in improving our facilities, ensuring we have the necessary tools for wildlife care.

Additions to current facilities

Adding to our facilities will enable us to provide a safe and comfortable environment for even more animals in need.

Conclusion

Community Support Importance

Community support is crucial for the success of wildlife hospitals, facilitating funding and resources needed for rehabilitation.

Impact on Wildlife Conservation

Together, we can positively impact wildlife conservation efforts, ensuring the survival of various species.

Vital Work of the Hospital

Rangers Lodge Wildlife Hospital plays a vital role in the rehabilitation of injured and orphaned wildlife, providing necessary care.

Our aim is also to positively educate and inform the public.
