

## Colgate and Faygate Parish Council Winter Maintenance Plan 2013

Reviewed 2015, Reviewed 2016, Reviewed 2017, Reviewed 2018, Reviewed 2019 -Sept, Reviewed 13h July 20

### Purpose:

The Parish Council has identified the service that it will provide, within the resources available, during the winter period, October to April.

West Sussex County Council are the lead agency for this initiative.

A pre-snow event statement will be issued by e-mail to all those who have been established as the Community Local Winter Maintenance Plan point of contact, to advise when to start implementing the plan and to indicate the likelihood of a prolonged snow event.

The daily decision is issued via WSCC gritting on twitter between 1<sup>st</sup> October & 31<sup>st</sup> April. All Parish, Town and Neighbourhood Councils are encouraged to sign up to receive regular tweets or view the daily decision updates on [www.twitter.com/wswccgritting](http://www.twitter.com/wswccgritting). Other information on the winter service can be found on WSCC's web site: [www.westsussex.gov.uk](http://www.westsussex.gov.uk).

More information can be found on parish on line: [Parish On line Mapping](#).

1. Selected person to coordinate local resources during adverse weather.

Name	E-mail	Landline Telephone	Mobile Telephone
Deborah Luxford	<a href="mailto:daluxford@btconnect.com">daluxford@btconnect.com</a>	01293 851373	07970 918096

2. Sign up to the WSCC gritter twitter on: [www.twitter.com/wscgritting](http://www.twitter.com/wscgritting) and agree who is going to check the daily decision.

Name	E-mail	Landline Telephone	Mobile Telephone
------	--------	--------------------	------------------

Deborah Luxford	<a href="mailto:daluxford@btconnect.com">daluxford@btconnect.com</a>	01293 851373	07970 918096
-----------------	--	--------------	--------------

3. A copy of a scaled map of the Parish has been received from the District Council.

Familiarise yourselves with those roads that are treated by WSCC under the precautionary salting routes shown on the WSCC web site:

[https://www.westsussex.gov.uk/living/roads\\_and\\_transport/roads\\_and\\_pathways/winter\\_maintenance/road\\_gritting\\_and\\_clearing\\_sno/which\\_roads\\_do\\_we\\_salt.aspx](https://www.westsussex.gov.uk/living/roads_and_transport/roads_and_pathways/winter_maintenance/road_gritting_and_clearing_sno/which_roads_do_we_salt.aspx)



Reproduced from or based upon 2009 Ordnance Survey mapping with permission of the Controller of HMSO © Crown Copyright reserved. Unauthorised reproduction infringes Crown copyright and may lead to prosecution or civil proceedings. West Sussex County Council Licence No. 100023447

WINTER SERVICE  
INFRASTRUCTURE

WSCC SNOW ROUTES

1:220,000



5. Mark on the map where you think the local problems may be. These may include (but are not limited to): **A separate map in annexed to this Plan**

Roads	Footpaths
Steep hills, tight bends, locations where surface water commonly accumulates, known seepage area and vehicle access routes to key facilities such as health clinics, schools, residential homes etc ...	High use sections, steep sections, pedestrian access routes to key facilities such as health clinics, schools, residential homes and other vulnerable people etc ...

Roads	
Steep Hills	Marked <b>PURPLE</b>
Tight Bends	Marked <b>GREEN</b>
Areas of Surface Water Accumulation	Marked <b>PINK</b>
Seepage Areas	Marked <b>PINK</b>
Health Clinic access routes	
School access routes	Marked <b>YELLOW</b>
Residential home access routes	
< insert others >	
< insert others >	
< insert others >	

Footpaths	
High use sections	Marked <b>YELLOW</b>
Steep inclined sections	
Pedestrian access routes to key facilities, inc:	
Health clinics	
Schools	Marked <b>YELLOW</b>
Residential homes	
Shops	
Footpath leading to the station	Marked <b>YELLOW</b>
< insert others >	
< insert others >	

6. Mark on the map the location of existing salt bins.

Salt Bin Locations		
Reference Number	Size (litres)	Location
1		Layby – Blackhouse Road, Colgate
2		Blackhouse Farm, Colgate
3		Red Cedar, Blackhouse Road, Colgate
4		Colgate Farm, Blackhouse Road, Colgate
5		Village Hall, Colgate
6		Dragon Pub, Colgate
7		Start of Faygate Lane, off A264
8		End of Park Road, Faygate
9		KWV -The park area-Rainbow Field
10		KWV-outside flats Bricklayer Lane

7. Mark on the map local routes that need to be treated by local arrangements (i.e. farmers or volunteers) that are not covered by WSCC precautionary network (P1 and P2 routes). These should match those areas identified in section 5.

Local arrangements being investigated and to be confirmed. Roads are Tower Road, and Forest Road in Colgate – Marked Red on the Map.

**2018-All routes are now done on an ad hoc basis by the public. PC provide the salt bins and maintain the salt content and allow all residents access to the provision. There are disclaimers in each salt bin stating the salt is used at the users own risk. Details will also be on the website to ensure proper use of the salt. (appendix 1)**

8. Identify appropriate storage locations for bulk bags – this needs to be an accessible location that is covered and secure. Single bags **will not** be dropped off alongside roads and per-identified areas as in past years as they will not be protected from the elements.

<b>Bulk Bag Storage</b>		
<b>Number of Bags</b>	<b>Location</b>	<b>Contact Details</b>
2	Hunters Oak, Faygate Lane Faygate	Keith Luxford 01293 851118
	No storage at Blackhouse Farm from Oct 2018.	

Additional items received

8 X salt bins

6 x Snow Shovels-located at councillor's homes.

4 x Road Warning signs – NOT Road Closed Signs.

NB: The Parish Council already hold the Emergency Packs supplied by WSCC

The Parish Council has increases its stock by 2 Salt Bins located in Kiln wood Vale, Faygate.

9. Approach volunteers within the community who may be able to assist with salt spreading, snow clearance, 4x4 vehicles and drivers. Detail all contacts and telephone numbers in your winter management plan.

July 18<sup>th</sup>, 2016 –it was agreed that the salt would be available for all residents to gain access rather than named volunteers. Disclaimers have been posted in each salt bin to highlight that residents use the salt at their own risk.

<b>Volunteers</b>		
<b>Name</b>	<b>Activity/Equipment</b>	<b>Contact Details</b>
Keith Luxford	4x4 vehicle	01293 851118
Deborah Luxford	Snow Clearance/salt spreading	01293 851373

10. Approach local farmers and ask if they are willing to assist with winter maintenance operations (i.e. salt storage, salt transport, snow clearance etc ...)

<b>Local Farmers</b>		
<b>Name</b>	<b>Activity/Equipment</b>	<b>Contact Details</b>

11. Please list any volunteers willing to assist in keeping schools open in your area through snow clearance and salt spreading into and around school facilities.

<b>School Specific Volunteers</b>		
<b>Name</b>	<b>Equipment Available</b>	<b>Contact Details</b>
As above – school also has own arrangements		

Useful information

Information on how residents can sign up to British Red Cross app - <http://www.redcross.org.uk/What-we-do/Emergency-response/Emergency-app-landing>

<https://www.westsussex.gov.uk/fire-emergencies-and-crime/dealing-with-extreme-weather/dealing-with-heavy-snow-and-ice/>

## Appendix 1-Information on salt

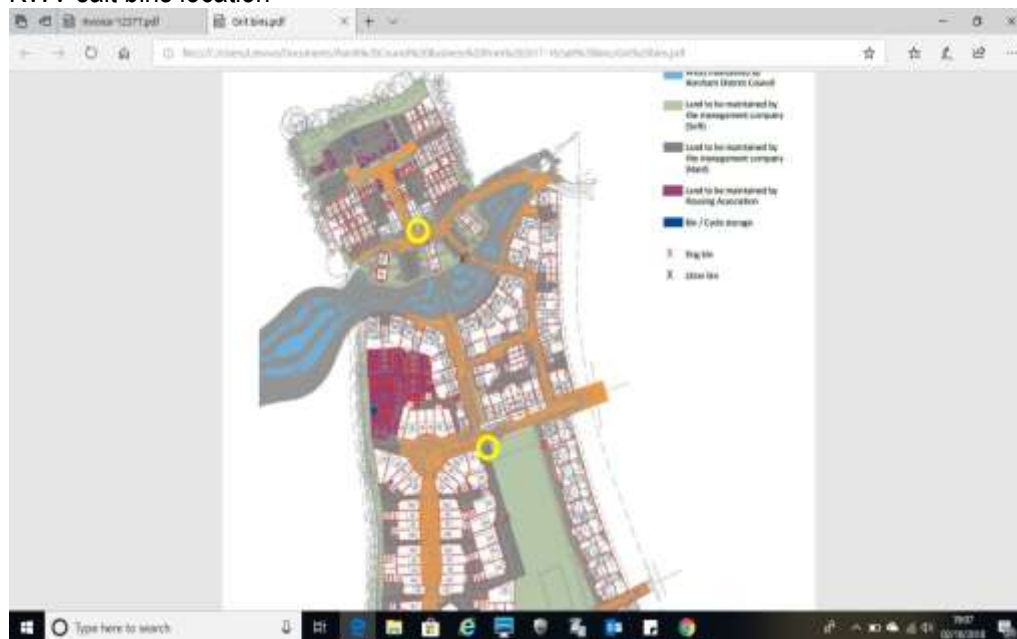
WSSC recommends a spread rate of approximately 20 grams of salt / grit per metres square when hand salting. Although salt / grit can be spread effectively with shovels, care is required to ensure over salting does not occur.

20 grams is in fact a very small amount. You don't need a lot of salt to protect a footway. Use it sparingly. Over salting is damaging to the environment and a waste of a limited resource.

Spread it evenly and your salt will last longer and cover a greater area.

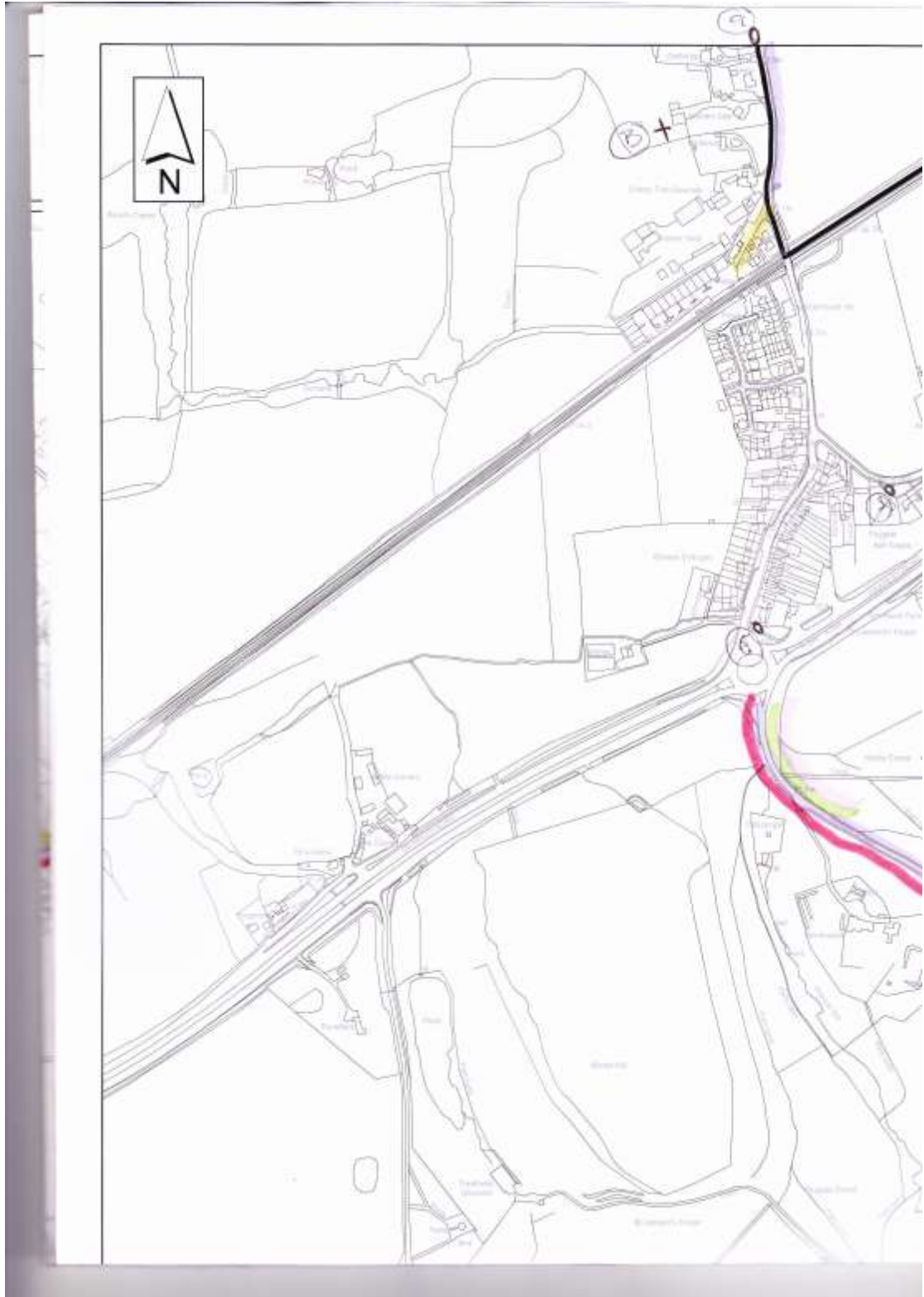
## Appendix 2

### KWV salt bins location

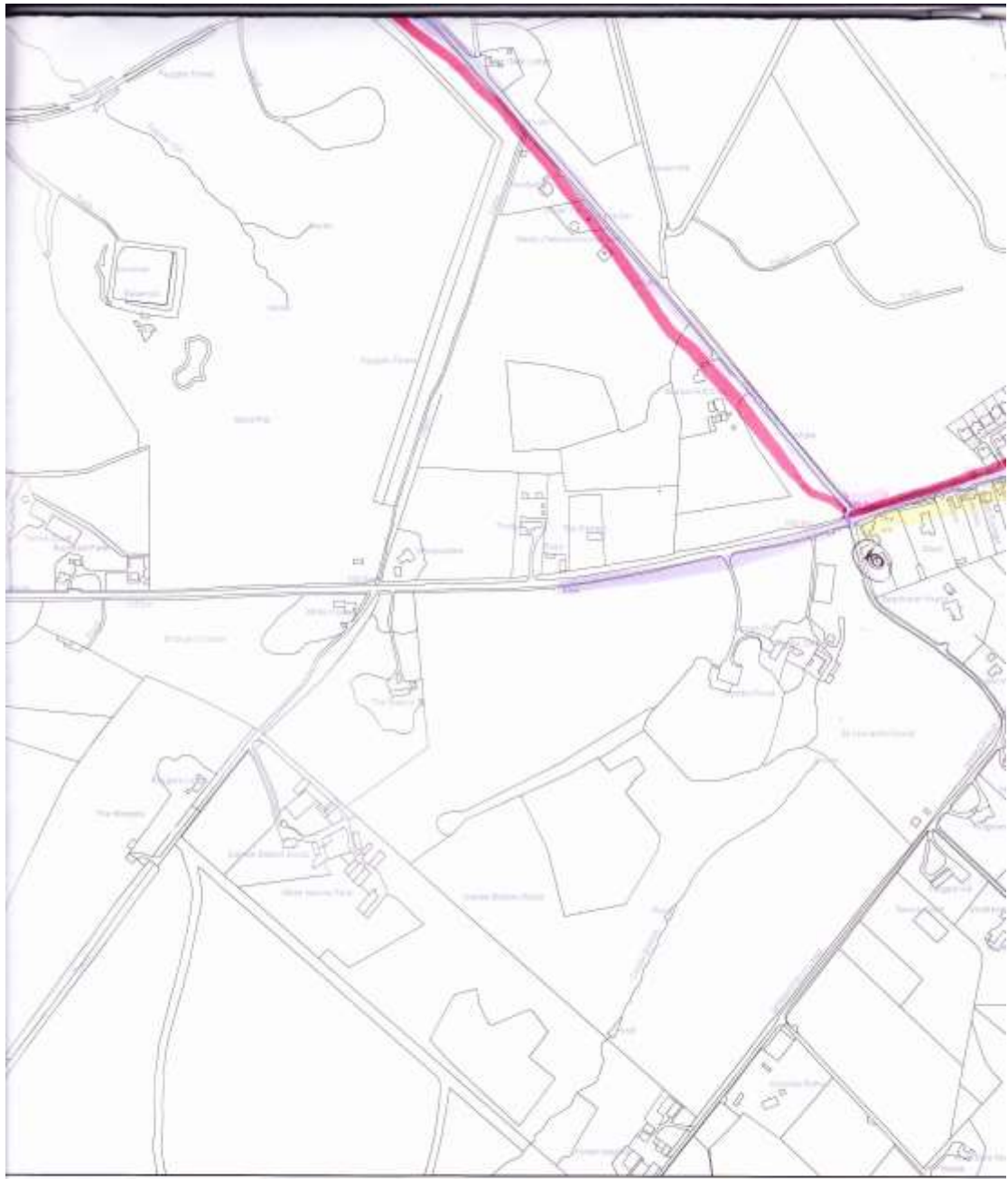




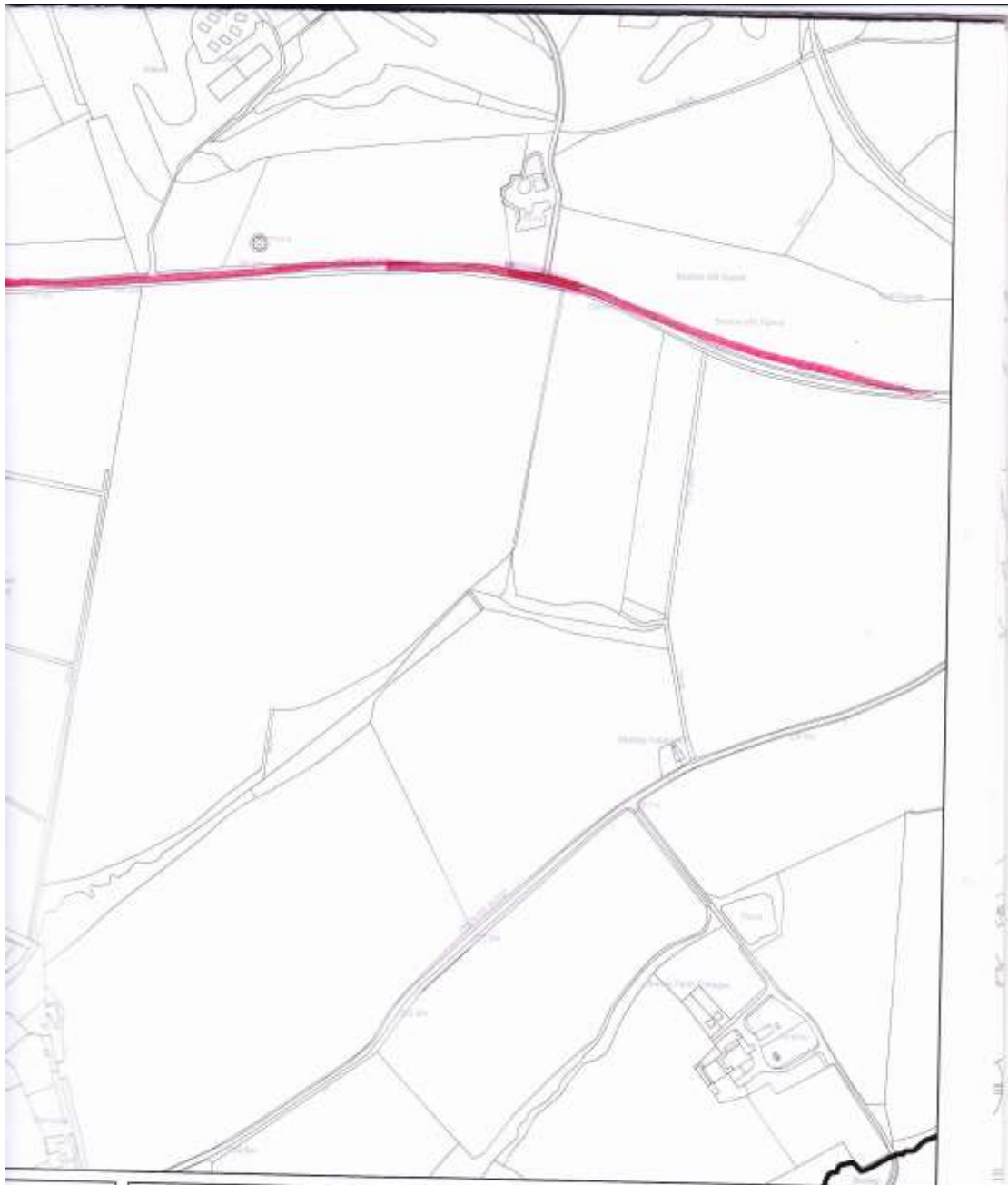












### Winter Maintenance Plan - Colgate 2013

Reference No :	Date : 08/07/13	Scale : 1:5000
Drawing No :	Drawn :	Checked :
		Revisions :